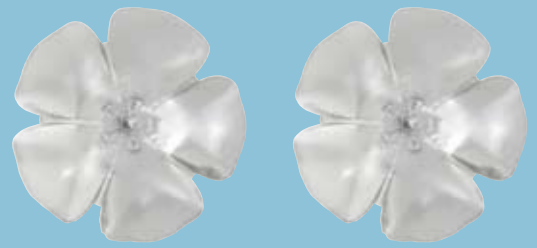


All you need to know about your new Starlettos...



Heel Sizes.

Starlettos are designed to fit a range of heel sizes. The size of the heel base should be between the two circles. Wearing heels outside this size range could result in loss or damage to your Starlettos.

Please note: To measure the heel size accurately please make sure that this page is printed or viewed at 100% size.

Wearing Starlettos.

- ✦ Place the Starlettos on a hard surface
- ✦ Lower your shoe heel into the centre hole
- ✦ Press the heel firmly downward until the heel is snugly pushed against the inside base
- ✦ Larger heels may need a gentle twist and push into the flexible Starlettos petals

Check each Starletto is completely fitted to your heels before walking. Check your comfort by taking a couple of steps on firmer ground before walking on soft ground.

Removing Starlettos.

- ✦ You can remove Starlettos without removing your shoes
- ✦ Place pouch over Starletto
- ✦ Pull down and gently twist
- ✦ Starlettos should slip off into pouch without muddying your beautifully manicured nails

Caring for Your Starlettos.

Starlettos work hard to keep you looking your best. To make them last longer, minimise walking on rough hard ground or paving. After each outing, rinse in warm water and wipe with a cloth. Scrubbing or use of abrasive materials will reduce gloss. Cotton buds in warm water should help remove build up in the hard to reach places.

Caution.

Designed for wearing on soft ground. Continuous use on concrete or paving may cause premature wearing of non-slip grip. Do not wear Starlettos on hard surfaces if the non-slip grip has worn away.



Warning: CHOKING HAZARD.



Keep out of reach of small children.



Machine washing even at low temperatures is likely to cause Starlettos to lose their lustre.



100% Australian

info@starlettos.com.au
www.starlettos.com.au

*A fabulous heel accessory
for a fabulous
outdoor event...*

STARLETTOS

